



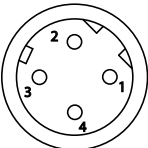
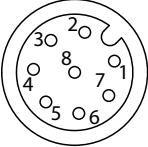
Ethernet (M12) Series Etherplug Receptacles

4 & 8 Conductor Ethernet Series Receptacles, 24AWG



Back Mount Receptacles | 12" Leads & CAT5e Cable | 60 Volt, 2 amps | IP67 Rating

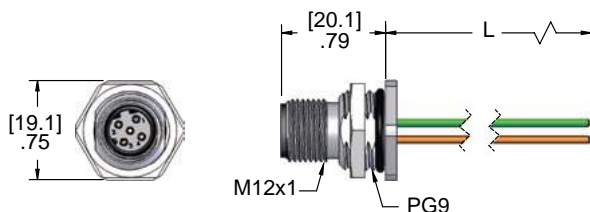


# of Poles	Male Faceview	Wire AWG Rating	12" Leads		CAT5e Cable	
			Male Receptacles	Female Receptacles	Male Receptacles	Female Receptacles
4 D-Coded	 M12 x 1	24 AWG 60V 2A	MDE45-4MR-BM-E45	MDE45-4FR-BM-E45	MDE45-4MR-BM-**	MDE45-4FR-BM-**
8 A-Coded	 M12 x 1	24 AWG 60V 2A	MDC-8MR-BM-E45	MDC-8FR-BM-E45	MDC-8MR-BM-**	MDC-8FR-BM-**

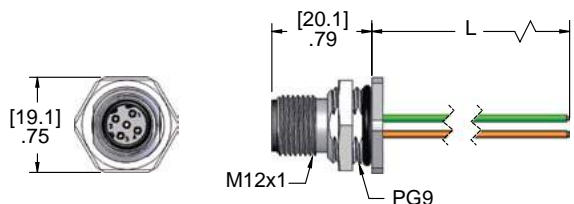
** Lengths in meters.

Etherplug receptacles with 12" leads or shorter come with discrete wires.
Shielded versions are available. Please consult the factory.

12" Leads

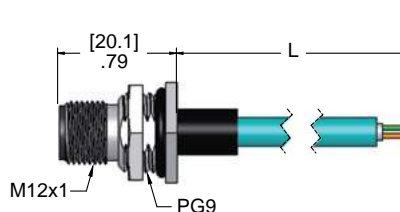


Male Receptacles

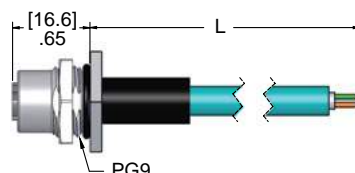


Female Receptacles

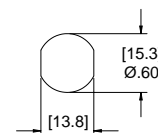
CAT 5 Cable



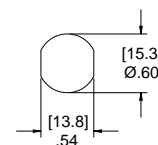
Male Receptacles



Female Receptacles



Cut-out



Cut-out

Specifications:

Shell: Nickel Plated Brass
Insulator: Polyamide
Cable: See PVC Cable specifications on page L-22
Wires: 24 AWG 60V, 2A

Contacts: Copper Alloy with Gold Plating
O-Ring: NBR
Jam Nut: Nickel Plated Brass
Temperature: -40°C to +80°C (-40°F to +176°F)